



CLEVER eRoute[®] v3.0

The *Powerful Business Service Management Resource to Actively Analyze Your Network Route Performance*

Key Features

- Schedule and collect route performance data remotely, enterprise-wide, using eCollector
- Collect host-centric route performance data using the optional z/OS TCP/IP-based Host Collector
- Analyze, from any location, route performance for any combination of endpoints, routes, time ranges, and response criteria
- Zoom-in on specific faulty routes and segments instantly with fault isolation
- Analyze route patterns, pinpointing route dominance, sharing, and usage. Determine where tuning would generate the most effective results
- View best, average, and worst response times instantly
- Interact to sort data, and access a rich collection of graphical and tabular reports
- Formatted displays of key SNMP routing MIBs such as OSPF, BGP, and RMON, as well as private MIBs such as OSA Express, Cisco CIPs, and CSS

Applied Expert Systems, Inc.
 149 Commonwealth Drive
 Menlo Park, CA 94025
 (650) 617-2400
www.aesclever.com

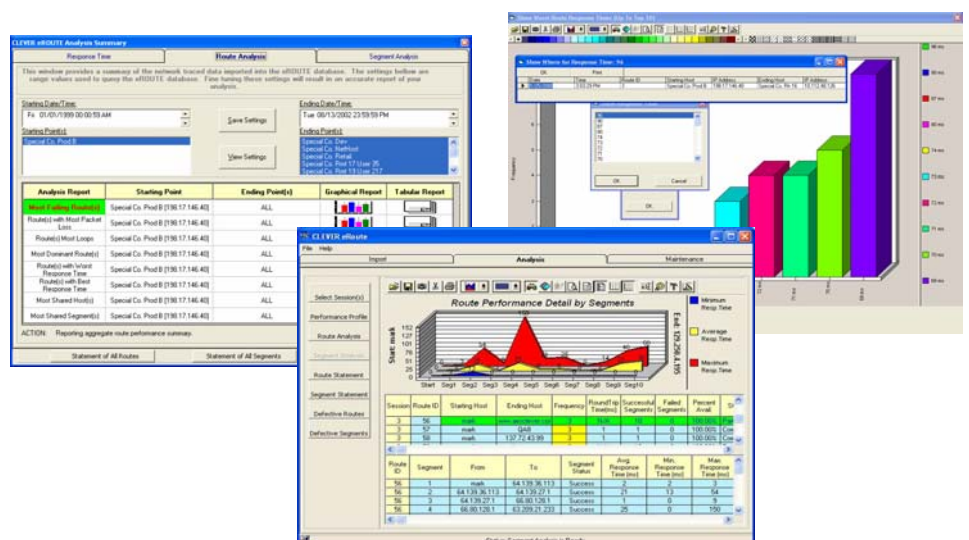
CLEVER™ Business Service Management

Your networks are the very foundation of your critical business services, and are of paramount importance to revenue generation. With a multiplicity of interconnected routers and mid-tier services, the intricacies of such issues as route discovery, route congestion, re-routing, and broadcasting challenge the effective management of your enterprise.

CLEVER eRoute expedites enterprise-wide IP route performance management and Service Level control, providing a systemic approach to the organization and analysis of route and segment data.

CLEVER eRoute provides:

- Scheduling and **collection of** enterprise-wide performance data, **remotely**
- Analysis of route performance for the entire network, **centrally**
- **Auto-discovery** of routes and patterns, and detailed analysis of all endpoints, routes, segment hops, time ranges, and response criteria to establish **performance baselines**
- IP routing **diagnostics** for analysis of defective routes
- Analyses of usage patterns, congestion, and defects for **capacity planning**
- **Management Reports** including route and segment hop summaries, response times, and defects
- Diagnostic information from **SNMP** public and private MIBs



Applied Expert Systems - The Business Service Management Company

Highlights of CLEVER eRoute®

Local and remote data collection: **Schedule** and automate remote route performance data collection and retrieval from anywhere in the network using eCollector. **Initiate** automated host-centric route data collections using the optional z/OS TCP/IP-based Host Collector.

Centralized analysis: **Correlate** specific host information and details relative to collected IP route data from a single focal point. **Analyze** route performance for any combination of endpoints, routes, time ranges, and response criteria. **Find** data collected from multiple locations and data sources easily within the centralized repository. **Identify** where tuning would generate the most effective results by performing detailed route pattern analyses to pinpoint route dominance, sharing, and usage by routes, segments, and hosts. **Perform** detailed route fault analysis (as specified by individual routes, segments, or time) for such categories as unreachable endpoints, packet loss, and flapping or looping routes. **Track** IP route faults and performance historically and investigate specific SLA performance issues using summary and trend analysis with graphical and tabular reports.

Data repository and zoom-in viewing: **Create** interval-based output data useful for long-term historical usage and performance analysis, trending, or route planning using automated route collection. **Zoom-in** on specific faulty routes and segments with fault isolation. **View** looping activity at a glance and produce a Hop Detail report highlighting looping routes. **Produce** detail and summary reports of defective routes and segments.

Support of SNMP public and private MIBs: **Expedite** identification of new hosts by viewing an IP host's System Description MIB via SNMP Query Assistance. **Support** all SNMP public MIBs and selected private MIBs, such as BGP, CSS, OSPF, Cisco CIP, OSA, and OSA Express.

CLEVER eRoute v3.0 (February 2004) introduces these new features:

The stand-alone **eCollector** (for both Windows® and Linux) can run both scheduled and on-demand remote traceroutes, providing seamless data collaboration between the eCollector Agents and the server.

The **Performance Profile** provides a fast overview of the best, average, and worst response times, as well as summary-level information on packet loss, looping, and defective routes/segments.

SNMP MIB Browser offers support for such new MIBs as OSPF, CSS, BGP, and OSA tables.

The **Host-IP Auto-Discover** function for network subnet and subnet masking simplifies the generation of Host-IP files.

System Requirements:

PC Workstation (CLEVER eRoute Server Software and eCollector Agent for Windows): Pentium® PC or compatible, 500MHz or above w/128MB RAM and 200Mb available disk space; Microsoft® Windows 98, ME, 2000, NT V.4.0 w/ SP6, or XP.

PC Workstation (eCollector Agent for Linux): Pentium PC or compatible, 500MHz or above w/128MB RAM and 200MB available disk space; Red Hat® Linux 7.3 or above.

CLEVER eRoute (optional) Host Collector Mainframe Requirements: IBM s/390 architecture, 175 3390-type device tracks for product libraries, and either z/OS V1R1 or later, or OS/390 V2R10 or later.

CLEVER is a trademark of Applied Expert Systems, Inc. CLEVER TCP/IP, CLEVER eRoute, CLEVER cTrace, CLEVER Buffer, CLEVER Web, CLEVER/SNA and CLEVER ePerformance are registered trademarks of Applied Expert Systems, Inc. All other trademarks are the property of their respective owners.



Applied Expert Systems, Inc.

149 Commonwealth Drive, Menlo Park, CA 94025 USA

Phone: (650) 617-2400 Fax: (650) 617-2420

Website: www.aesclever.com

Email: info@aesclever.com



MM-3-0406-01